



# Oak Hill

LAWN CEMETERY & CREMATORIUM

Winter 2022

## BEREAVEMENT SERVICES COMPLEX PROGRESS SINCE THE AUTUMN EDITION

RG Carter have made good progress with the Chapel and Bereavement Centre despite some inclement weather before Christmas. Most of the scaffolding has now been removed as the external brickwork, roofing and the dry-stone copings have been completed. Work on the reflection pond has started.



*Far Left: Attenuation pond doing its job with all the rain.*

*Left: Interior light fittings and roofing work.*

*Below: Current progress on the Bereavement Services Complex build.*



### THE TEAM AT HATFIELD

Donald Mackenzie – Project Manager • Greg Bowden – Site Manager • Richard Houghton – Quantity Surveyor

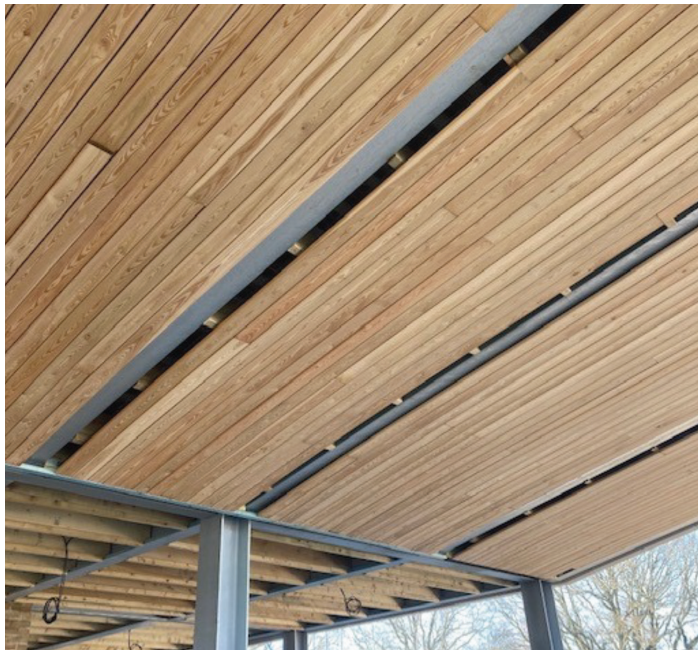


# BEREAVEMENT SERVICES COMPLEX



## ROAD WIDENING

The road widening is nearly complete and streetlights are being installed.



## CHAPEL DEMOLITION

The former chapel demolition has been completed and the landscaping works are about to commence to create some new memorial gardens and update the existing.

The entry and exit road to the cemetery has reverted to its former position.

Internally, the first fix and plastering are under way and more of the wood panelling has been installed (left).

All of the utility supply services have started on site. You may have noticed the works currently taking place off-site on Bishops Rise, these are so that the utilities company can connect the Bereavement centre to the main services.



Works are anticipated to complete: **Late Spring 2023**  
The new facility is due to open in: **Summer 2023**

CGI image of finished development. (Right)



For more information contact the Bereavement Team:

Telephone 01707 357000 Option 6

More information about the new crematorium can be found on [one.welhat.gov.uk](https://one.welhat.gov.uk) or email [propertydevelopment@welhat.gov.uk](mailto:propertydevelopment@welhat.gov.uk)

