



Oak Hill

LAWN CEMETERY & CREMATORIUM

Autumn 2022

BEREAVEMENT SERVICES COMPLEX

Welwyn Hatfield Borough Council has recognised the need to update its bereavement services in order to tackle the escalating waiting times and increasing distances needed to travel to existing local crematoriums.

The development will provide a new larger chapel for both burial and cremation, as well as combining the facilities needed for both of these services. The chapel will also serve as a space for remembrance services throughout the year.

The Council's Bereavement Services Team will be located in the new complex with a reception making access to staff easier, as well as improving the facilities for visitors.

From the outset, the intention for the new bereavement centre, is to avoid the one size fits all approach that characterises many new crematorium developments. The nature of the centre and the services offered will be reflected in a design that sits comfortably within its context and respects the dignity of the occasion.

The new building will sit below the tree line when first viewed from the entrance, minimising its impact on

the openness of the greenbelt. When visitors enter the site and reach the top of the ridge, rather than finding themselves amongst a group of buildings, as they currently do, they will be in an open area, landscaped with new planting and trees. This newly revealed vista provides long views across the cemetery and the valley beyond.



THE TEAM AT HATFIELD

Donald Mackenzie – Project Manager • Greg Bowden – Site Manager • Richard Houghton – Quantity Surveyor



FURTHER INFORMATION

Work is progressing to the Bereavement Centre with the main structure in place after a busy and productive summer by our contractors, R G Carter.

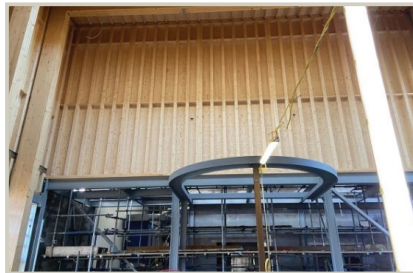
The chapel brickwork is almost complete, and a green roof has been installed. The external area brickwork is expected to be complete by Christmas. *(Right)*

The mains gas, water and electric ducts are being installed. First fix electrics have commenced and the cremator has been delivered ready for installation.



All of the former chapel, lodge and workshop buildings have been demolished and the area fenced off. Entry and exit to the cemetery is along the roadway running along the top part of the site which has been made two-way for all traffic. Signage has been provided around the site. The demolished area has been returned to topsoil and is intended to be used as additional burial space as well as landscaped spaces and gardens. *(Right)*

Internal Structure - The wood panelling is in, which now gives the internal structure more of a finished feel. *(Below)*



 **Works are still on schedule to complete in Spring 2023.**

CGI image of finished development. *(Right)*



For more information contact the Bereavement Team:
Telephone 01707 357000 Option 6
The new facility is due to open in Spring 2023
More information about the new crematorium can be found on one.welhat.gov.uk or email propertydevelopment@welhat.gov.uk

